

**MARCH 2013**

## From the Chair

Hello again. Now that we're back into the working year it feels like the holiday season, including the fantastic IPENZ/EA Christmas Soirée was a long time ago. But we have a great calendar of UK Branch events for you to look forward to, starting with our Prestige Lecture on the Christchurch Earthquakes response by IPENZ Deputy Chief Executive Nicki Crauford. Check the details below and book your place straight away.



I have a request. Can I please have a volunteer to edit the newsletter for the branch? It's a quarterly collection of member updates, news and upcoming events. You don't need to be a committee member, just willing to spend an hour or so every few months practising your cut and paste skills. Please email me and let me know if you can help.

### Welcome to new Branch members

A warm welcome to the following IPENZ Members who have recently moved to the UK. We hope to meet you at our events soon:

**Professional Members:** Tom Williams, Nerissa Harrison, and Thomas Cripps

**Graduate Members:** Jonathon Yu, Eija Hulkko, Sam Sherlaw, and Courtney Groundwater.

I look forward to seeing you at the Prestige Lecture.

Kelvin Smith

[Chair@ipenz.org.uk](mailto:Chair@ipenz.org.uk) / [www.ipenz.org.uk](http://www.ipenz.org.uk)



<http://www.linkedin.com/groups/IPENZ-UK-Branch-2232787>

It's open to non-members too...

**Please join our IPENZ UK LinkedIn group.** It is an open group, so encourage your non-member colleagues to join as well. You can connect with other IPENZ members, learn of job opportunities, as well as keep up to date with Branch news and activities.

## Upcoming Events

### Prestige Lecture – Christchurch Earthquakes Response

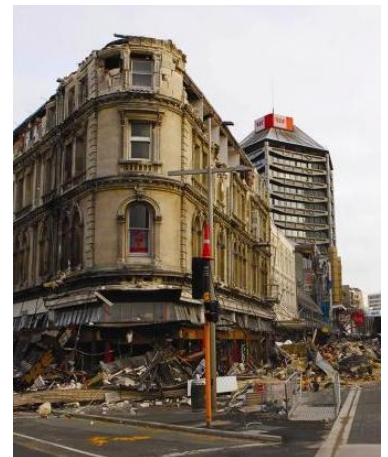
**Thursday 11 April**, from 6.00pm

**Venue:** Hays Recruitment, 107 Cheapside, London, EC2V 6DN  
(see the map below)  
Nearest LU stations: Bank, St Paul's, Mansion House

**Presenter:** Dr Nicki Crauford, Deputy Chief Executive of IPENZ

Nicki will talk about the earthquakes in Canterbury including the Royal Commission of Inquiry which reported late 2012, the government's response and how the engineering community in New Zealand is learning from the earthquakes and responding.

**Times:** 6.00 to 6.30pm: arrival, drinks and snacks  
6.30 to 6.40pm: Introduction from Sam Atkins of Hays  
6.40 to 8.00pm: presentation and questions  
8pm onwards: networking & continuing drinks / snacks



*Proudly sponsored by:*

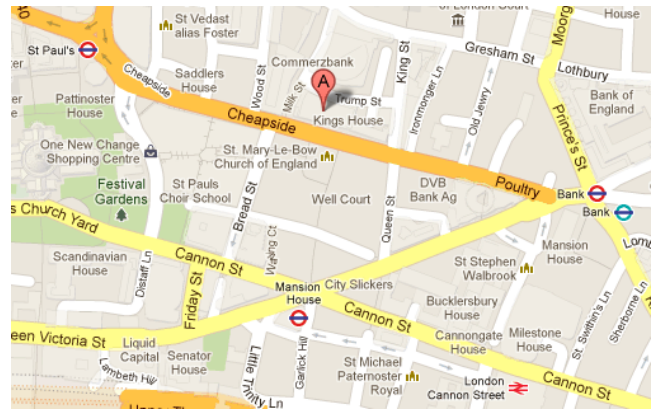
**HAYS** Recruiting experts  
worldwide

**Cost:** no charge

**RSVP:** now, to Liam Duff, [HonSec@IPENZ.org.UK](mailto:HonSec@IPENZ.org.UK)



Nicki Crauford has been the Deputy Chief Executive with IPENZ since 2011 where she leads the engineering team, and is working to shape and lead regulatory reforms in the engineering profession and determine the profession's response to the recent earthquakes in Canterbury.



Prior to this position she was Chief Executive of the Institute of Directors and has held senior roles in the oil, electricity and gas sectors in the UK and NZ including many years with national grid owner, Transpower where she was a member of the executive team.

Nicki is a Director with Wellington Cable Car and a past director of Genesis Energy, one of the largest electricity generators in New Zealand. She holds a bachelor degree in chemical engineering from Newcastle University and a PhD in fluid mechanics and combustion from Southampton University. She is a Fellow of IPENZ.

Nicki has represented England, Great Britain and New Zealand at fencing including World Cup events in Europe and at the Commonwealth Fencing Championships in Kuala Lumpur. She was the New Zealand national foil champion in 1995 and 2005.



## ANZAC Day Test – Tenpin bowling

**Thursday 25 April, 6pm**

Our annual sporting conquest of the Australians (hopefully)...

**Venue:** Rowans,  
10 Stroud Green Rd,  
Finsbury Park,  
London, N4 2DF



This year we again take on the highly competitive Engineers Australia team at Tenpin bowling, pizza eating and beer drinking.

**Cost:** tba

**RSVP:** (now) to [Events@EngineersAustralia.co.uk](mailto:Events@EngineersAustralia.co.uk)

## Crossrail Canary Wharf Station/TBM site visit

**May** – details tba

A guided tour of the station box beneath the West India dock, while TBMs Elizabeth and Victoria traverse the station. A rare opportunity to catch a glimpse of the business-end of the TBM during the project.

Places will be limited.

**RSVP:** Please email [Chair@ipenz.org.uk](mailto:Chair@ipenz.org.uk) to register your interest.



## AGM and Technical Talk – Crossrail Paddington Station

**June** – details tba

After a quick AGM, we will receive a presentation on the construction of the Crossrail Paddington Station from Kiwi Engineer and station project manager, Ben Hardy at the Paddington Station project offices overlooking the construction site.



## Later in the year

### Summer Family Barbecue:

**Mid-summer.** At the fabulous Henley Rowing Club in Henley-on-Thames.

### Graduates evening:

**October.** Graduate members looking for more information on routes to professional membership can come along to our Graduates evening in October. (You can also email John Matthews on [CACoordinator@ipenz.org.uk](mailto:CACoordinator@ipenz.org.uk) for information at any time).

### Christmas Soirée:

**December.** This year we will host the Soirée at the NZ House penthouse – great food, NZ beers and wines, great views over London, and a bit of banter with the Aussies.

**Other technical talks** will be arranged during the year as suitable speakers and venues become available. If you would like to suggest a topic or project, please let us know and we'll make the arrangements - email Kelvin at [chair@ipenz.org.uk](mailto:chair@ipenz.org.uk)

---

## Recent Events

### 2012 Christmas Soirée

Last year's Soirée was again a great night, with plentiful Christmas fare, and great company. Thanks again to Engineers Australia for hosting another fantastic get together.

*Pictured:* UK Branch Committee members posing at the Soirée (l-r): Graham Barber, David Bigwood, Andrew Delugar, Ian Kirker, Liam Duff, Kelvin Smith, and John Matthews (our Competence Assessment Coordinator).

