



IPENZ UK Branch August 2009 Newsletter

From the Chairperson

Greetings Members,

I have just arrived home after a fantastic summer day in the park at The Canary Wharf Jazz Festival.

This month we cover the recent Annual General Meeting, the Branch Member Survey, Upcoming and Future Events. We also welcome new members and touch on the Engenerate Photo Competition.

Our Annual General Meeting was held on 24 June 2009 at the Mace Office in Camden, London. After sharing a few drinks and nibbles on the Mezzanine we relocated to the Ground Floor for a presentation on the Dublin Metro by member Jonathan Gammon.

After an interesting presentation and some stimulating discussion the Annual General Meeting was held. If you would like to read the AGM Meeting Minutes please refer to our website www.ipenz.org.uk.

Simone J Beesley

IPENZ UK Branch Chairperson
Chair@ipenz.org.uk

Branch Member Survey

The results

We recently conducted a voluntary survey of our members here in the UK to learn more about where you live and what you do.

Thank you to Lawrence Wong for organising the survey and compiling the results which are available with this newsletter.

Upcoming Event

River Thames Boat Cruise

**Engineers Australia and IPENZ UK Branch Joint Event –
Saturday 22 August**

If you would like to attend the Boat Cruise and have not yet responded to Engineers Australia make sure you do before Monday 17 August 2009.

For more details check out Upcoming Events:

www.engineersaustralia.co.uk

See you there.



Competition

Push the boundaries

Members of IPENZ UK Branch are encouraged to enter the Engenerate IPENZ photo competition.

Perhaps you can capture the winning photograph during the Thames River Cruise. The scenery will provide a wealth of inspiration. Please refer to the advertisement below for further details.



Future Events

Henley Barbeque

From Midday on Sunday 6 September 2009

Members, their partners and children are welcome to attend the Annual IPENZ UK Branch Barbeque at the Henley Rowing Club, Henley-on-Thames.

Henley-on-Thames in South Oxfordshire was first settled in 1179. The town has a population of 10,646 people and is the home of the Henley Royal Regatta. The historic event became Royal in 1851 when Prince Albert became patron of the regatta. The town can be recognised by the five arched bridge crossing the river, constructed in 1786. A barbeque lunch is provided for attendees as are non-alcoholic drinks. We invite attendees to bring a salad or a dessert to share and ask that you indicate what you will bring when you register.



Venue	Henley Rowing Club Henley on Thames Wargrave Road Oxfordshire RG9 3JD	Cost	£8/Adult Members and Partners £12/Adult Non Member Free to Children less than 12 years of age.
--------------	--	-------------	--

Payment	Reference Sort Code Account	Your Name 40-07-13 90829870	BYO	Alcohol 1 x Salad OR Dessert/couple
----------------	-----------------------------------	-----------------------------------	------------	--

RSVP Please RSVP to Chair@ipenz.org.uk by Friday 29 August 2009. Please confirm whether you plan to bring a salad or a dessert when you register.

Highly Recommended

If you have struggled to make it an IPENZ UK Branch event previously and you are looking for a chance to experience a special event check out the details for the Annual IPENZ UK Branch Barbeque at Henley Rowing Club.

Read on for a recommendation from Committee Member Lawrence Wong.

“Last year was the first opportunity we had to go to the IPENZ BBQ at Henley Rowing Club (est.1839). I heard a lot about BBQ and the prestige of the rowing club, who have produced numerous world class rowers. The reputation of the Henley venue was further boosted by a British colleague. I was a bit unsure about going because of the hike from London with 4 kids in tow, ages 4mths to 12 years old at the time, and using public transport. But what the hey, we managed to drag them half way across the world. My in laws were out from NZ so we brought them along as well.

The trip was a breeze and in fact very pleasant. The weather was a cracker and venue spot on, being right beside the river. There was a great cross section of people of all ages and children. The added bonus was that Henley is also such a lovely village, so we also had a little stroll around before the BBQ kicked off and a little more on the way back to the train.

The day was a winner with everyone in the family. It is a definite ‘must’ for anyone who has not been, as it is great hanging around with a great bunch in a quintessentially English setting. Also, I understand it is darn near impossible to get to use a venue like this without being a club member or having some other connection.

Karen, my wife, has been asking me for over a month unprompted now when the BBQ will be, which I guess shows how much we enjoyed it. So I guess I will see those who might make it there this year.

Cheers

Lawrence Wong”



Other Events of Interest

Tri Nations at *The Southerner*

Enjoy the Tri Nations Rugby with cold Speights on tap (or L&P for non drinkers) and also the great taste of some kiwi pies!

Dates:

Sat 22 August	All Blacks Vs Australian 11.00 kick off
Sat 12 September	All Blacks Vs South Africa 08.30 kick off
Sat 19 September	All Blacks Vs Australia 08.30 kick off

The Southerner is located just around the corner from Temple Station at 210 The Strand, London WC2R 1AP.



Hours:

Monday – Thursday 11.00 – 23.00
 Friday & Saturday 11.00 – 23.30
 Sunday Closed
 Phone 0207 936 2536
 Email southernerlondon@aol.com

Please Note:

Open times vary for games that start earlier than 11.00.

IPENZ UK Branch 2009 members survey results

1. Which of the following communications from IPENZ do you read? (Multiple answers possible)

	Response Percent	Response Count
Weekly engineering Direct Email	52.5%	32
Bi-monthly e-nz magazine	62.3%	38
Engineering Dimensions	39.3%	24
Quarterly IPENZ UK Branch newsletter	68.9%	42
IPENZ UK branch event reminders	65.6%	40
IPENZ website (www.ipenz.org.nz)	29.5%	18
IPENZ UK branch website (www.ipenz.org.uk)	11.5%	7
None	1.6%	1
<i>answered question</i>		61
<i>skipped question</i>		0

2. Where are you based? (Single answer)

	Response Percent	Response Count
London	49.2%	30
Home counties ie within commuting distance of London	14.8%	9
Scotland	16.4%	10
Northern England	4.9%	3
Midlands	4.9%	3
Southern England (other than London and home counties)	6.6%	4
Wales	0.0%	0
N Ireland	0.0%	0
Elsewhere	3.3%	2

- | | |
|--------------------------------------|----------------------------|
| 1. Galway, Ireland | Mon, Mar 2, 2009 7:47 AM |
| 2. Presently in Lebanon but UK based | Wed, Feb 11, 2009 10:24 AM |

<i>answered question</i>		61
<i>skipped question</i>		0

3. What is your engineering specialism? (Single answer)

		Response Percent	Response Count
Civil		14.8%	9
Highways		8.2%	5
Transportation		6.6%	4
Rail		0.0%	0
Environmental		8.2%	5
Construction		3.3%	2
Bridge		4.9%	3
Structural		11.5%	7
Water		3.3%	2
Electrical		8.2%	5
Lighting		0.0%	0
Waste		1.6%	1
Geotechnical		0.0%	0
Mechanical		6.6%	4
Chemical		8.2%	5
Instrumentation		0.0%	0
Other (please specify)		14.8%	9

1. Information	Tue, Mar 3, 2009 10:38 AM
2. food/process	Mon, Mar 2, 2009 8:04 PM
3. Wood Manufacturing Process	Mon, Mar 2, 2009 6:35 PM
4. Retired was Civil	Sun, Mar 1, 2009 11:46 PM
5. Manufacturing	Fri, Feb 27, 2009 9:23 PM
6. Energy	Wed, Feb 11, 2009 10:52 AM
7. fire safety	Wed, Feb 11, 2009 10:23 AM
8. Commercial	Wed, Feb 11, 2009 10:10 AM
9. Project Management/ Project Controls (multiple sectors)	Wed, Feb 11, 2009 8:45 AM

	answered question	61
	skipped question	0

4. What are your reasons for belonging to the UK branch? (Multiple answers possible)

	Response Percent	Response Count
So that my membership is still valid when I go back to NZ	60.7%	37
To meet other NZ engineers in the UK	34.4%	21
Networking / job-hunting	16.4%	10
To become a full member of IPENZ	23.0%	14
To continue my professional development	54.1%	33
Other (please specify)		7

1. Because I'm currently based in the UK	Thu, Mar 19, 2009 11:16 AM
2. Because MIPENZ was my first Professional Membership	Sat, Mar 7, 2009 10:52 AM
3. To continue being engaged in IPENZ, for the access to NZ house penthouse!	Mon, Mar 2, 2009 1:22 PM
4. Keep in touch with what other NZ engineers in the UK are getting up to	Mon, Mar 2, 2009 9:37 AM
5. As a founder member continue contact with UK branch	Sun, Mar 1, 2009 11:46 PM
6. I live in the UK so it's the local branch	Wed, Feb 11, 2009 11:33 AM
7. Wasn't intentional, didn't even know there was a UK branch	Wed, Feb 11, 2009 9:18 AM

	answered question	61
	skipped question	0


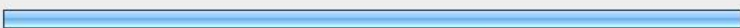

5. What do you want to get from your branch? (Multiple answers possible)

	Response Percent	Response Count
Technical talks	59.0%	36
Site visits	52.5%	32
Road to membership seminars / graduate evenings	18.0%	11
Social networking events (eg Summer BBQ, Xmas Soiree, Anzac Day softball)	41.0%	25
Engineering heritage visits	34.4%	21
Family events	13.1%	8
Continuing professional development	49.2%	30
Nothing	16.4%	10
Other (please specify)		3

1. Events in the North / North West	Wed, Mar 18, 2009 11:53 AM
2. Others provide similar services closer to me.	Sat, Mar 7, 2009 10:52 AM
3. All of the above! But living in Cumbria I'm a bit out of the way.	Wed, Feb 11, 2009 10:00 AM

	answered question	61
	skipped question	0

6. When would you be available to attend events? (Multiple answers possible)

		Response Percent	Response Count
Weekdays		8.9%	5
Weekday evenings		82.1%	46
Weekends		53.6%	30
		answered question	56
		skipped question	5

7. What would encourage you to participate in Branch events?

1. Free beer.	Sun, Apr 12, 2009 11:42 AM
2. They are relevant to Q5	Thu, Mar 19, 2009 11:16 AM
3. Events in the North West	Wed, Mar 18, 2009 11:53 AM
4. More young people involved in the Branch.	Mon, Mar 16, 2009 1:36 PM
5. N/A	Thu, Mar 12, 2009 1:21 PM
6. Good events	Sun, Mar 8, 2009 7:55 PM
7. If they are in Scotland.	Sun, Mar 8, 2009 5:28 PM
8. If the Branch was not London-centric! But, of course , I understand!	Sat, Mar 7, 2009 10:52 AM
9. Interesting topics	Wed, Mar 4, 2009 12:44 PM
10. Only just moved here so not sure at this stage	Tue, Mar 3, 2009 10:38 AM
11. events in Midlands	Mon, Mar 2, 2009 11:22 PM
12. that they are more beneficial to me and assist in me finding new jobs	Mon, Mar 2, 2009 8:04 PM
13. Easy access i.e location, location, location.	Mon, Mar 2, 2009 6:35 PM
14. Recruitment/employment related events - helpful for getting a job when I want to move back home.	Mon, Mar 2, 2009 6:04 PM
15. held on weekday evenings at a slightly later time - say starting at 1830 so don't have to finish work early to attend	Mon, Mar 2, 2009 5:59 PM
16. Timing of the events (evenings for meetings/seminar), evenigns/weekends for site visits. anything that is interesting, even if it is not in my field.	Mon, Mar 2, 2009 1:22 PM
17. I live too far from London to make a special visit to join the events	Mon, Mar 2, 2009 11:51 AM
18. More relevance to my engineering discipline.	Mon, Mar 2, 2009 11:09 AM
19. 7. What would encourage you to participate in Branch events?	Mon, Mar 2, 2009 10:42 AM
20. There have been some evening talks i have been interested in, but was too busy to leave early enough to get there	Mon, Mar 2, 2009 10:39 AM
21. Location	Mon, Mar 2, 2009 10:26 AM
22. Having the Branch events in locations closer to me would be beneficial. It isn't that easy to get to London, and this is where the events occur.	Mon, Mar 2, 2009 10:19 AM
23. The level of interest I had in the event	Mon, Mar 2, 2009 10:19 AM
24. Help to become chartered before I turn 40	Mon, Mar 2, 2009 10:16 AM
25. Interesting site visits	Mon, Mar 2, 2009 10:03 AM
26. It would be useful if week day events could start from say 6:30-7:00 onwards to make it easier to to attend.	Mon, Mar 2, 2009 10:00 AM
27. Location (in London) and relievance to my field (Civil/ Highway Engineering)	Mon, Mar 2, 2009 9:37 AM
28. more regional events but appreciate most members in london and SE	Mon, Mar 2, 2009 9:37 AM
29. Busy with family commitments (10month old baby) which makes it difficult to achieve work/life balance at present.	Mon, Mar 2, 2009 9:13 AM
30. N/A	Mon, Mar 2, 2009 8:49 AM

31. Location - are there any events in Ireland?	Mon, Mar 2, 2009 7:47 AM
32. Nothing. Seldom if ever in London area these days. Suggest you revise Question 4 so that "Other" is an answer!!!	Sun, Mar 1, 2009 11:46 PM
33. Events where I could meet other young NZ engineers and technical events etc relevant to my area of work (aerospace).	Sun, Mar 1, 2009 11:26 PM
34. More events would give me more opportunities to participate. Cheap/free events. casual events.	Sun, Mar 1, 2009 11:13 PM
35. Relate to current activities	Sun, Mar 1, 2009 11:08 PM
36. It would be limited as my spare time goes towards my MBA, which I am currently doing	Sun, Mar 1, 2009 10:48 PM
37. A local branch (to Scotland in my case)	Sun, Mar 1, 2009 10:30 PM
38. The difficulty I have is living in the Midlands, attending events in London is unrealistic	Sun, Mar 1, 2009 9:35 AM
39. Free beer	Fri, Feb 27, 2009 9:23 PM
40. Event reminders	Sun, Feb 22, 2009 9:58 PM
41. .	Mon, Feb 16, 2009 12:45 PM
42. Interesting speakers	Mon, Feb 16, 2009 8:12 AM
43. Nothing specific. This is just a matter of availability of time.	Sun, Feb 15, 2009 2:25 PM
44. Don't know	Fri, Feb 13, 2009 10:44 AM
45. Living outside London it is difficult to attend weekday evening events without taking time off work. Cost is also a factor. I have not attended an event and do not know any of the other UK based NZ Engineers. I appreciate that events need to be timed to suit the majority and that I am probably one of a fairly small minority.	Thu, Feb 12, 2009 11:13 PM
46. Time	Wed, Feb 11, 2009 10:06 PM
47. More central location, relaxing drinks.	Wed, Feb 11, 2009 7:43 PM
48. Topics that can contribute to CPD Free! Meal and drinks	Wed, Feb 11, 2009 2:34 PM
49. interesting technical topics	Wed, Feb 11, 2009 11:33 AM
50. Local events in Scotland	Wed, Feb 11, 2009 10:52 AM
61. Them being London based.	Sun, Feb 8, 2009 11:21 PM

	answered question	61
	skipped question	0

8. What is your age range?

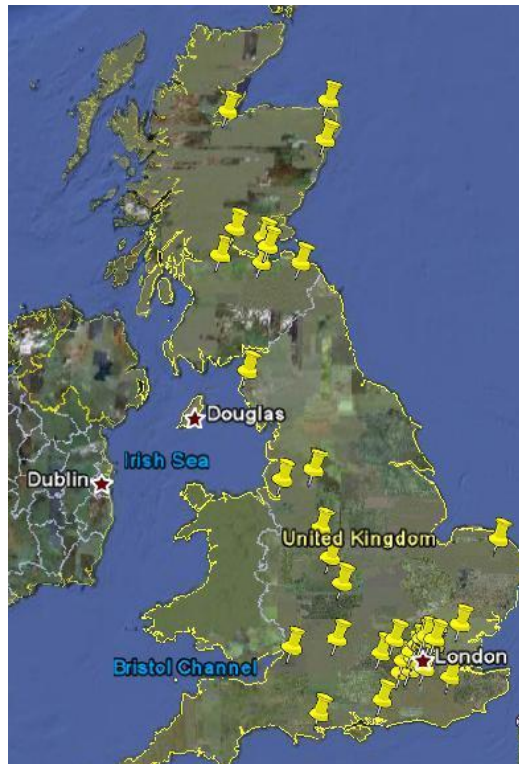
		Response Percent	Response Count
Under 30		31.1%	19
30 to 40		44.3%	27
40 to 50		9.8%	6
50 to 60		11.5%	7
60+		3.3%	2
	answered question		61
	skipped question		0

9. What is your postcode? (For population spread of members)

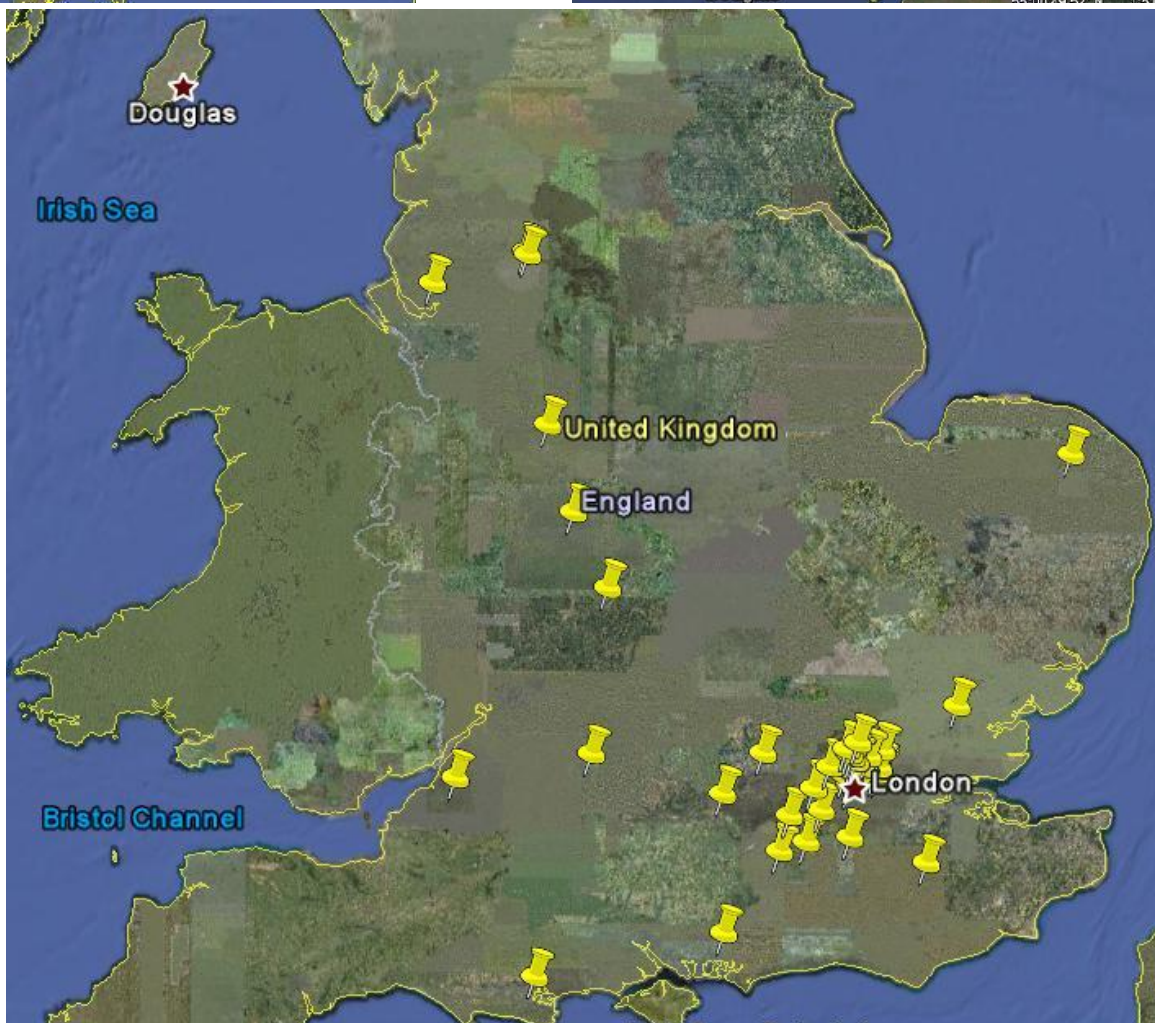
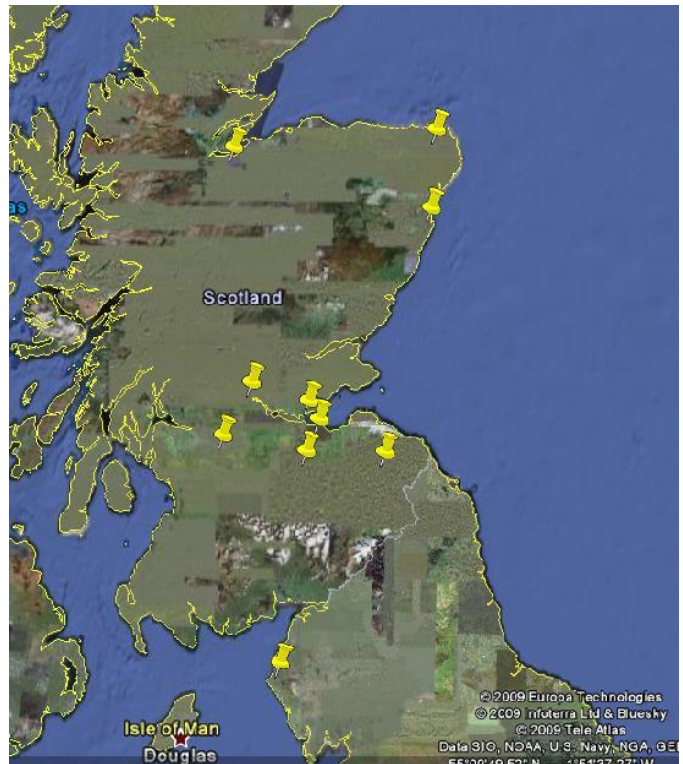
Please note details have been left out for privacy. Please see map for member distribution, which has been populated from this question.

	Response Count
	61
answered question	61
skipped question	0

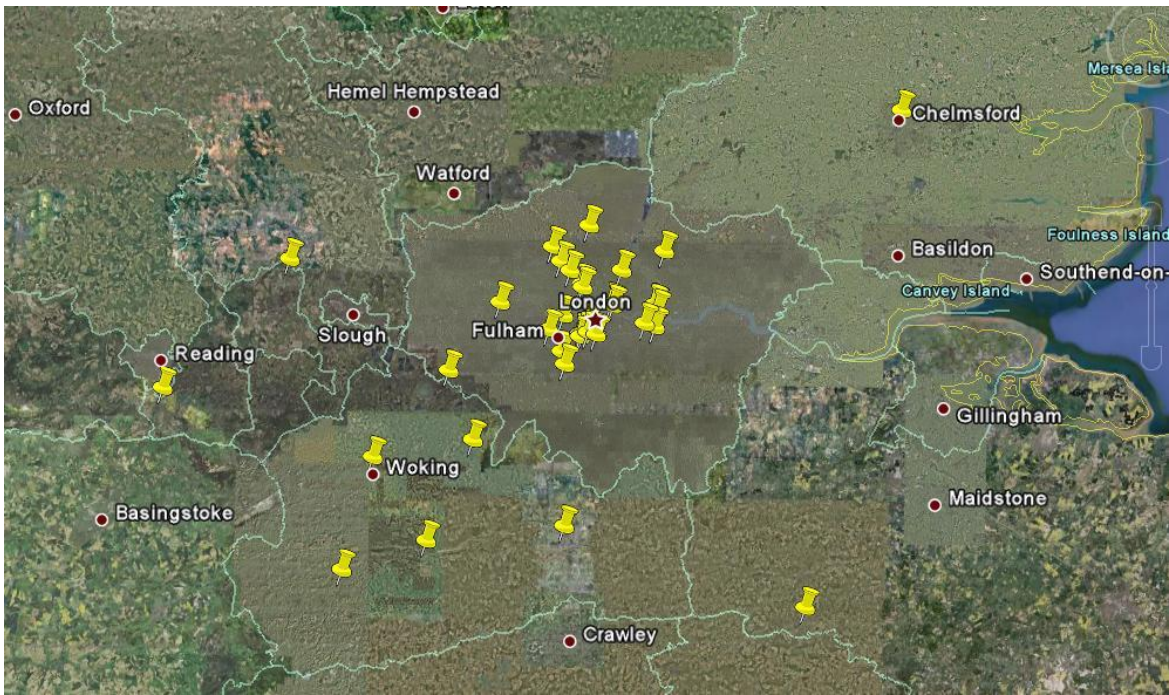
UK Wide Members



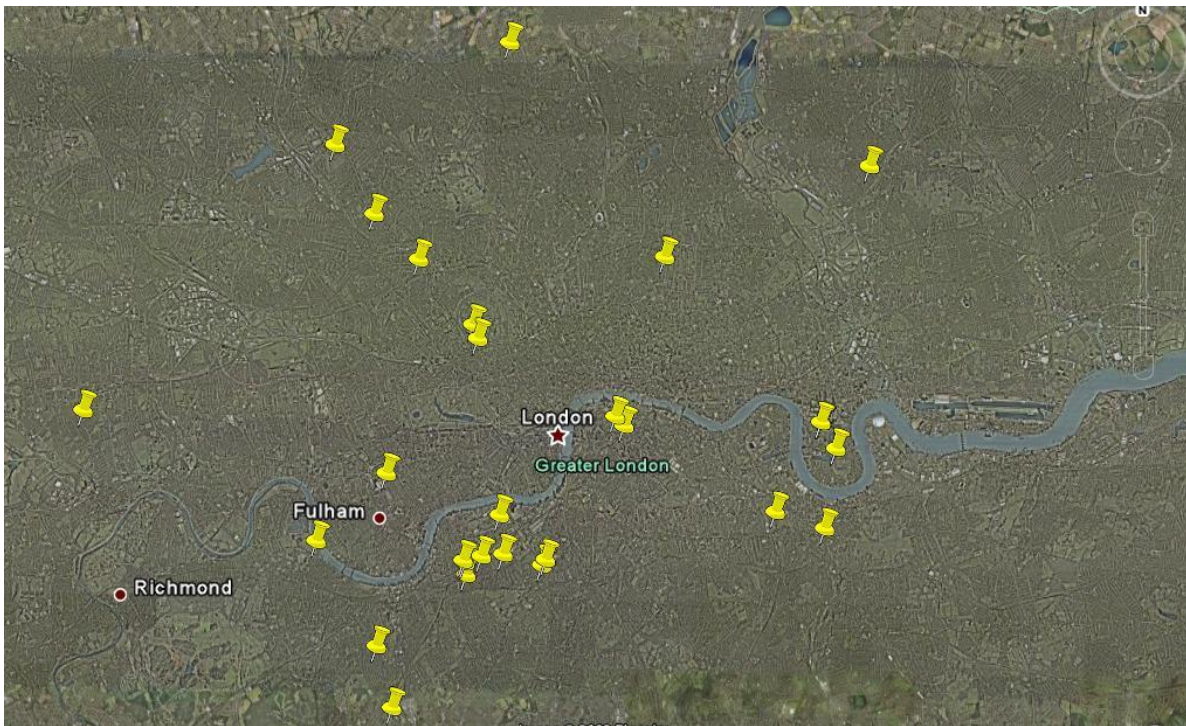
Northern Half UK



Southern Half UK



Greater London and Outskirts



Greater London