

Our newsletter begins with the sad news of the loss of one of our colleagues, Don Kershaw, a prominent engineer who graced the cover of New Civil Engineer magazine, from which the image below was taken. If you would like a copy of the article on Don's career from the magazine please get in touch with me.

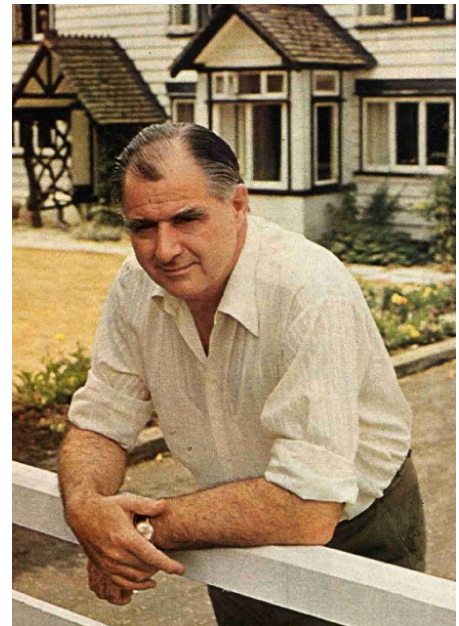
Kelvin Smith
Chairman IPENZ UK Branch
Chair@ipenz.org.uk

Don Kershaw

After a lifetime working as a Civil Engineer, Don Kershaw (some may know him as Tiny) died peacefully in his sleep at his home in the early hours of Saturday 3 June 2006.

Don graduated from Liverpool University in 1943, and served in the REME from 1943-45. After working in the UK for Wallasey Council, Don immigrated in 1951 to New Zealand where he began his long association with dam construction, building the Waikato hydro-scheme in NZ, including the Mangakino and Waipapa Dams, for the public works company.

After returning to the UK Don joined Balfour Beatty, before leaving for Nigeria as Chief Engineer at the Kainji Dam, 1963-65. After Nigeria, Don again returned to the UK as acting General Manager at Balfour Beatty before leaving them to join the Italian civil engineers Impregilo as their agent for the Tarbela Dam in Pakistan 1972-76. For his work on the Tarbela Dam, particularly the emergency recovery planning, Don was given the equivalent of a knighthood by the Italian government. Don then founded his own consultancy working on dam projects and arbitration, until a gradual retirement at Long Wittenham, Oxfordshire.



IPENZ UK Branch member Keith Armstrong recalls working with Don...

I first met Don at Ilorin in Nigeria on return from one of my weekly visits to Mokwa, the future railhead for the huge Kainji hydroelectric project. He had just arrived in the country. He was seated at a bar, beer in hand, and relaxed as if he had always been there - as the principal customer. After our introductory salutations, we went on to Kainji together where he was to establish his office as the joint consultants' representative.

His arrival had been telegraphed impressively. When Balfour Beatty had taken up references in the usual way to assess whether he was big enough for the job, one reply was said to query whether the job was big enough for him.

It is not easy to judge such things objectively. He had risen rapidly to senior management in New Zealand among the war-scarred chiefs of hydro-electric development in the Waikato and had taken in his stride charge of large road works construction in the north of England.

Nigeria was different but his serious purpose and vision was quickly evident. He applied himself to developing an organization which had to achieve, apart from supervision of one of Africa's largest engineering works, good liaison with multi-national consultant and client control, protection of the work force from disease and ill health and some defence against political instability. That the contractors, Impregilo, accomplished as they were, overcame a devastating intrusion of civil war to complete the works on time owes much to the supportive strength of his team and their successors.

Don saw his business as construction management. He used his large frame to advantage and had a deceptively folksy wit to overlay, and sometimes embellish, his more serious thinking. It was testimony to the regard in which his peers held him that Impregilo, the foremost dam builders of the late 20th century, sought him out to take charge of the Tarbela dam works in Pakistan. It was the largest project in the World so far. They thought him the best for the job.

Due to faulty design by the consultants, one of the diversion tunnels failed after some reservoir filling had commenced. Then followed desperate moves to empty the reservoir and repair the damage. After several weeks of crisis, the construction works were saved.

Few tests of construction management come harder than that. Don passed it. It is right then that we remember him with affection and gratitude as an exceptional engineer of our time.

Keith Armstrong

IPENZ UK News

AGM and Annual Reception

There was a relatively small turnout at this year's event in June at Doggett's Coat and Badge, but there were some new faces and plenty of opportunity for networking. Minutes of the meeting will be available on the IPENZ UK Branch website in due course.

With Jonathan Gammon reaching the end of his two year stint as Chairman and Andrew Delugar off to sunny Australia to work, there was a call for new executive members of the Committee. They are:

Chairman Kelvin Smith

Originally from the Wairarapa, the B.Tech from Massey led me into Production Engineering of car wiring manufacture, Operations Management of Hydraulic Equipment manufacture and then planning of military aircraft maintenance before moving to the UK. I have been a Londoner for five years and a Risk Analyst for DS+A Ltd for most of that time, currently seconded as Risk Manager to TfL / London Rail's East London Line Project (see Site

Visit details below). I have been editing this newsletter for the last two years and will pass that responsibility over to new committee member Emma Bould.



I received an unofficial handover of Chairmanship from Jonathan Gammon at the Chief Executive's dinner (see above), with Graham Withers, Andrew Delugar, Andrew Cleland (IPENZ CEO), Derek Chisholm, Adam Milligan and Emma Bould.

I look forward to the challenges of being Chairman, with the main focus for myself and the committee being increasing involvement of Members in Branch activities.

Honorary Treasurer remains *Selwyn Aickin*



I'm originally from Auckland where I graduated with a BE in Electrical & Electronic engineering from Auckland University in 1985. I then worked for the Auckland Electric Power Board for four years before embarking on my 'Big OE.' I still haven't returned to NZ, apart from visits home every three years on average.

I have been working for the same company in the UK since 1990 although it has metamorphosed many times since I joined and is presently called Parsons Brinckerhoff. I am a consultant in the field of network and generation control systems for electricity companies. Almost all of the projects I have worked on since joining the company have been for electricity companies outside the UK and I have often had to spend significant amounts of time on site as the Resident Engineer. I am presently coming to the end of a two year period on site in Damascus, Syria, although I expect to be moving over the border into Lebanon shortly to commence work on a new project there, again for around two years on site.

I joined IPENZ as a Graduate Engineer in 1985 and have become a professional Member of IPENZ since then. I have always supported my local branch of IPENZ as best I can, firstly in Auckland and in the UK since the early

1990s. I was elected to the position of Honorary Treasurer for the UK Branch in 1995, taking over from the previous incumbent, whose name escapes me right now, who returned to NZ. I was told at the time that returning to NZ was the only way to get out of being Hon. Tres. and, so far, that has proved to be an accurate statement. I have subsequently taken on the role of honorary webmaster, running the www.ipenz.org.uk website for the Branch.

Honorary Secretary Adam Milligan

With Andrew Delugar away on business at the time, Adam was put straight to work keeping the minutes of the AGM. Watch this space in the next newsletter for details of Adam's amazing rise to secretarial glory.

The continuing Committee members are:

Jonathan Gammon (ex-officio as Immediate Past Chairman)

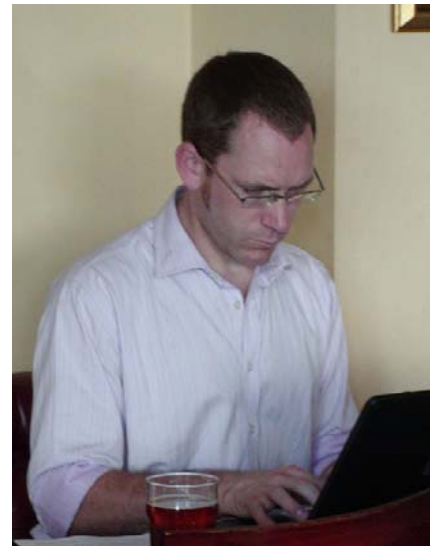
Graham Barber

Graham Withers

Ian Kirker

Robert Minchin

Derek Chisholm (Competence Assessment Coordinator – see Newsletter 177 for his profile)



New Committee members are:

Emma Bould (soon also to be Newsletter Editor)

Justin Coe

Tom Williams.

Many thanks go to Graham Barber for organising the venue which turned out to be fantastic. The Terrace Bar at Doggett's Coat and Badge had excellent service and great views, helped along by a warm London summer evening. We look forward to using this venue again for future events.

Chief Executive Andrew Cleland's UK Visit

IPENZ Chief Executive Andrew Cleland visited the UK in June where he visited nine UK engineering institutions. Chair of the Standards and Accreditation Board, Basil Wakelin, was part of a panel evaluating Germany for potential admission as a signatory into the Washington Accord. Both then spent a week in Dublin at the International Engineering Workshops associated with the Washington, Sydney and Dublin Accords, plus the Engineers Mobility Forum and Engineering Technologist Mobility Forum agreements.

The major outcome from Andrew's visit to the UK institutions is that it is likely within a year that we will have developed a "standard" agreement, administered by the Engineering Council UK for recognition of NZ-based degrees and registration. With one or two exceptions this would then be applied routinely by all the institutions, and should reduce the amount of inconsistent treatment some of our Members still experience.

The major outcome of the Dublin workshops was a surprise - the draft proposal for IPENZ to apply for provisional membership in the Dublin Accord in June 2007 was given to the Dublin Accord signatories for comment, but they said it was perfect 'as is' and convened a meeting to elect IPENZ to provisional membership immediately! .Until we get full signatory status (for which we can probably apply in 2008 once our systems are up and running) there will be no mutual recognition benefit, but the first step has been taken.

Whilst Members will not see the direct benefits of our involvement in the Dublin workshop and the meetings with UK-based institutions as a step change in what happens during 2006-2008, both Basil and Andrew consider that we have made a number of advances that will assist New Zealand engineers travelling internationally on an ongoing basis.

Committee members took the opportunity to meet with Andrew during his visit (as shown above) and Jonathan Gammon accompanied him to meetings with some of the UK institutions. More detail on the outcome of the visits will be published in Engineering Dimension.

Continuing Professional Development - by correspondence from New Zealand

Avoiding Ethical Dilemmas – Distance Learning Course

The respect which society and business accords the engineering profession is earned as its members demonstrate a strong commitment to ethics. This distance-learning course introduces you to the ethical values that underpin their profession and to the obligations that flow from them.

The course discusses the provisions contained in the IPENZ Code of Ethics and CPEng Rules, as well as numerous legal statutes. Participants should be prepared to reflect on their own practice.

For details check the IPENZ website using the following link - <http://www.ipenz.org.nz/ipenz/nzecal/avoiding-ethical-dilemmas.cfm>

Forthcoming Events

SITE VISIT – East London Line Project

Friday 28th July 1.30pm

ELLP Site Office, Cnr Bethnal Green Rd and Wheler Street, London E1 6AE
No charge

The East London Line Project is moving towards delivering new and extended railway links in the east of the city, assisting urban regeneration and the London Olympics.

Following on from the Technical Talk held last year we are able to offer a visit to the Enabling Works sites in the North of the Route (highlighted on the map) where a number of bridges are being refurbished or replaced.

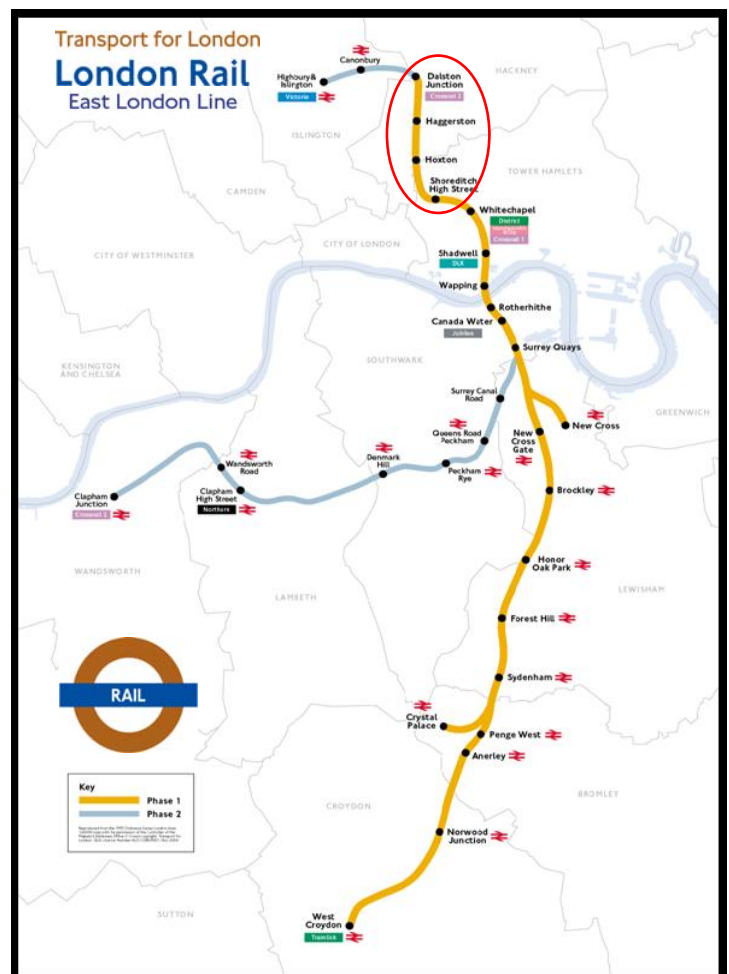
The briefing will start at about 2pm after coffee and cookies. It's a railway project so a long and skinny site by nature. The visit involves a 2 mile walk northbound to Dalston Junction; including access onto the Kingsland Viaduct last used in the 1980's. We'll take a public bus ride back to the site office by about 4.30pm to drop the day-glo. The second part will involve another mile of walking, on public footpaths, to just past Brick Lane identifying important features along the way, and then a curry and Cobra if desired at the individual's expense.

Hard hat, Hi-Vis vest and safety boots are a requirement for the visit. The project can loan a few hats and vests but you will need your own boots.

To register on the guest-list, please contact:

Kelvin Smith

Chair@lpenz.org.uk



Annual Family Day and Barbecue

Sunday 20th August 2005 from Midday

Henley Rowing Club – see map
Wargrave Rd, Henley-On-Thames, Oxfordshire RG9 3JD

£8 per person (free for children 16 years and under)
plus some help please with salads, desserts and furniture

In general, we would appreciate:

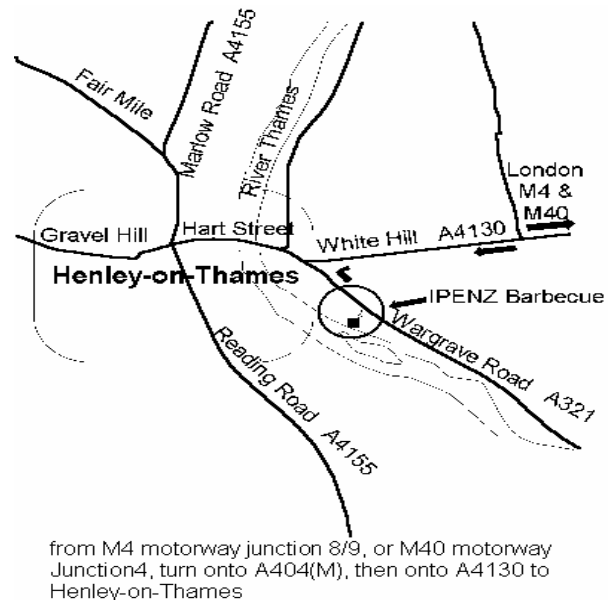
- from members – it would be appreciated if you could bring along a salad or dessert plate
- from everyone – if you have them, please bring garden chairs, tables, sun umbrellas and outdoor games



The annual barbecue is a fun day at which family and friends are most welcome to join us - the more the merrier. We are privileged once again have the use of the Henley Rowing Club's grounds beside the River Thames. This has proved to be a popular location for the BBQ in recent years

Please use the [Online Reply Form](#) on the Ipenz UK website www.ipenz.org.uk and pay by automatic transfer through your bank to confirm your place or complete the reply slip at the end of this newsletter and post it with your payment. Please reply as soon as possible, but by 11th August at the very latest as we need to know the number of people attending for catering purposes.

We need to receive your reply form by **12 August** at the very latest, thanks.



Graduates Evening

Thursday 7th September 2006 (note: was previously advertised as Wed 6th)
6.00pm for 6.30pm

The Southern Cross, upstairs bar, 65 New Kings Rd, London, SW6 4SG
(Near Wandsworth Bridge Road, opposite Eel Brook Common) [Location Map](#)
No charge. Finger buffet provided. A cash bar will be operating throughout the evening

The Graduates' Evening is an opportunity for those contemplating MIPENZ, CPEng or Int(PE) status, to find out about the alternative routes to professional membership, along with a Q&A session.

Jeanette van Barneveld, the Competence Development Manager from IPENZ National Office, who is visiting London, will give a presentation on Professional Membership of IPENZ.

The evening will provide all the information relevant to graduate engineers (whether GIPENZ members or not) wanting to progress towards professional recognition.

If this is a topic that you have not considered before, we suggest that you prepare yourself for the seminar by looking at the requirements for professional membership at <http://www.ipenz.org.nz/ipenz/join>.

The nearest tube stations are Fulham Broadway and Parsons Green. The nearest train station is Wandsworth Town. [Suitable bus routes](#) are the 28 which runs from Wandsworth Station and travels over Wandsworth Bridge and along Wandsworth Bridge Road towards Fulham Broadway and the 295 which runs from Clapham Junction and travels over Wandsworth Bridge and along Wandsworth Bridge Road towards Fulham Broadway. Both also operate in the opposite direction and are suitable for getting from Fulham Broadway tube station to the pub.

This seminar has proved popular in the past and is likely to provoke widespread interest so it would be advisable to be early.

To register your interest, please contact:

Derek Chisholm
CACoord@ipenz.org.uk

Thames River Cruise with Engineers Australia

Saturday 9th September 2006

around 2:00pm - to be confirmed

£ tba

We have once again been invited by Engineers Australia to join them for an afternoon cruise along the Thames with food, drinks, possibly a guest speaker, and a chance to meet Australian and New Zealand Engineers.

Technical Talk – Advanced Composites for Structural Applications

Dr Sam Luke, Director of Advanced Technology, Mouchel Parkman

Tuesday 24th October 2006 at 6.15pm (refreshments from 5.30pm)

Mouchel Parkman Offices, 307-317 Euston Rd, London, NW1 3AD

Refreshments provided £ tba

Advanced FRP Composites are becoming increasingly popular in engineering applications due to their lightness, toughness, strength and durability. Dr Sam Luke, Mouchel's advanced technology director, who has pioneered the use of these materials in strengthening and new build applications in the UK will outline how Mouchel Parkman has worked in partnership with clients, contractors, suppliers and research organisations over the past 10 years to develop cost effective and technically efficient solutions that minimise disruption, whilst giving a new lease of life to existing structures or virtually maintenance free options to new structures.

Sam will show a number of examples of real examples of strengthening projects on the railway, highway and on building structures, and will talk about some all composite bridge structures that have been successfully installed

in various parts of the world. The talk will end with a video presentation of the design and installation of Western Europe's first all composite highway bridge.
Refreshments provided

Joint Christmas Soirée for IPENZ and EA members and guests

Friday 1st December 2006

Downer Room, Australia House, Strand, London, WC2B 4LA
£tba

This year the Soirée is organised by Engineers Australia and their fantastic hospitality will once again be on offer - great food, drinks and festive spirit. Quote from the EA website "...the kiwis put on a great event at NZ House last Christmas. We won't be outdone....."

Put this evening in your diary now, and don't plan too much for the next day.

Other technical talks and site visits will be arranged as opportunities arise

We challenge you to help us to find them.

If you or your company are working on a project, about which a talk, presentation at a technical meeting, or site visit could be arranged please contact the Chairman or the Hon. Secretary.

Also, please contact them if there any sites of engineering interest you would like to visit or if you would like more details about any of the above events.

Kelvin Smith

(07815) 872 834 office hours

(020) 7407 3552 evenings

Chair@ipenz.org.uk

Adam Milligan

(020) 7904 7629 office hours

(07917) 775 948 evenings

HonSec@ipenz.org.uk

Upcoming Events Hosted by Other Groups

The following events are being hosted by others but may be of interest to members of IPENZ UK. There are further events noted in the IPENZ UK website, plus links to the various societies' websites. Please contact the organisers of the events for further information.

Toast New Zealand

Saturday, 15th July 2006 11:00am - 6:00pm
Regent's Park, London

Toast 2006 brings you the largest Australasian food festival in the northern hemisphere, along with a line-up of top entertainers including Dave Dobbyn, Hayley Westenra, Roy & HG and Paul Kelly.

This year Toast moves to the royal venue of Regent's Park on 15th and 16 July. Alongside the great entertainment, the event sees the introduction of 'Taste of Australasia', the largest antipodean dining experience in the UK. 'Taste of Australasia' brings together the highest profile antipodean restaurants and chefs, such as Bill Granger and John Torode, to create the country's most prestigious celebration of New Zealand and Australian cuisine. Complementing the food and entertainment, wine education classes, cooking demonstrations, travel and property seminars also capture the wonderful flavours of New Zealand and Australia.

[Check Their Website](#) for more details

Four Kiwis Walk Into A Bar

Monthly stand-up comedy night featuring the best in Kiwi and honorary Kiwi comedy talent

Last Thursday of every month

Doors open 8.00pm, show starts 8.30pm

Headliners Comedy Club, George IV, 185 Chiswick High Road, London W4 2DR

www.sanza.co.uk

Tel: 07890 830142

fourkiwicomedy@aol.com

IPENZ UK Branch Family Day and Barbecue Reply Slip

Please fill in the details on the form below and post it, along with your cheque, to:

IPENZ UK Branch
c/o Ian & Melissa Kirker
Hill Cottage
8 Silverdale Road
Wargrave
Berkshire
RG10 8EA

Please make cheques payable to 'IPENZ UK Association'.

We need to receive this form by **12 August** at the very latest.



Please include me in your barbecue arrangements on 20 August 2005.

Name:

Telephone:

There will be _____ adults and _____ children in my party, including myself.

My cheque for £_____ is enclosed (£8.00 per adult to cover food and drink).

I will be providing a _____ Salad/Dessert.

I am able to bring a barbecue yes/no.